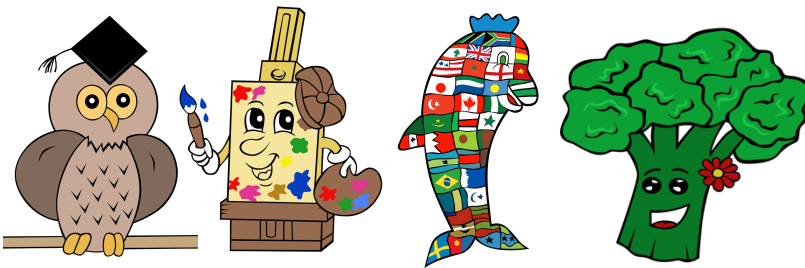




Home Learning Policy

2025



Llandough Primary School Homework Policy

Aims of the Policy

- to ensure consistency of approach throughout the school;
- to ensure progression towards independence and individual responsibility;
- to ensure the needs of the individual pupil are taken into account;
- to ensure parents/guardians have a clear understanding of the expectations placed on them, and the pupil, by the school;
- to improve the quality of the learning experience offered to pupils;
- to support the learning experience via reinforcement and revision;
- to provide opportunities for parents and pupils to work together to enjoy learning experiences;
- to encourage children to develop long-term strategies for future needs, in Year 5; to prepare children for transfer to secondary school;
- to extend learning opportunities for more able pupils by enabling them to take ownership over their learning.

Homework can be a useful way of consolidating and extending learning and is a regular example of home and school working together to support children's learning. In Year 5 and 6 it can be a very useful way to introduce children to the expectations of secondary education, where homework may be a daily requirement.

Examples of homework tasks given at Llandough Primary School

- exploring spelling patterns;
- over a period of time, learning multiplication tables – this usually begins in Year 2.
- to use notes or a simple framework of ideas to produce a piece of work;
- to complete an exercise which helps to consolidate some learning introduced in the classroom – “show me what you know about.....?”;
- to give the child(ren) more practice in a process or method learned in class;
- a piece of research – “what can you find out about?”;
- an activity – “make a chart of”;
- an observation – “keep a record over a few days of”;
- a pupil may decide to pursue further an interest from a topic/theme by using books or other sources at home, visiting a library, using a computer, or making a model or diagram.

We expect that parents will support their children by:

- taking an active interest in their child's homework;
- encouraging them and praising their efforts;
- supporting them in particular tasks;
- helping them to devise strategies for remembering facts;
- supervising and enabling them to complete tasks;
- noting when a reasonable amount of time has been spent on a homework task and making the decision to stop, if necessary, before completion (and informing the class teacher of this decision).

As a school, we will ensure that we:

- set tasks that are reasonable and matched to the pupils' needs;
- acknowledge completed homework and the effort required to complete tasks (e.g. with a signature, smiley face and/or comment);
- support and listen to parents who ask for our help;

Llandough Primary School Homework Guidelines: Nursery to Year 2

Nursery	
Sounds	5 minutes a day for sounds/ words given on SeeSaw.
Reception	
Reading	Reception send home reading books of colour band on a Wednesday. Parents/Carers note when they have read with their child in reading records. Reading Books are sent back to school on a Monday.
Sounds	Word tubs with initial sounds sent home on a Wednesday.
Spellings	Start in January given weekly
Home Learning Tasks	At appropriate times over a Term
Year 1	
Reading	Minimum of 10 mins daily of colour band Bug Club (Active Learn), noted in Reading Record by parent/carer.
Spellings	Practise daily.
Home Learning Tasks	At appropriate times over a Term
Year 2	
Reading	Minimum of 10 mins daily of colour band Bug Club (Active Learn), noted in Reading Record by parent/carer.
Spellings	Practise daily.
Home Learning Tasks	At appropriate times over a Term

Year 3	
Reading	Minimum of 10 mins daily of colour band Bug Club (Active Learn), noted in Reading Record by parent/carer.
Spellings	Practise daily.
Home Learning Tasks	At appropriate times over a Term

Llandough Primary School Homework Guidelines: Year 4 to Year 6

Year 4	
Reading	Minimum of 10 mins daily of colour band Bug Club (Active Learn), noted in Reading Record by parent/carer.
Spellings	Practise daily
Home Learning Tasks	Weekly task to be completed. Sent home Friday and returned Wednesday.
Year 5	
Reading	Minimum of 10 mins daily of colour band Bug Club (Active Learn), noted in Reading Record by parent/carer.
Spellings	Practise daily
Home Learning Tasks	Weekly task to be completed. Sent home Friday and returned Wednesday.
Year 6	
Reading	Minimum of 10 mins daily of colour band Bug Club (Active Learn), noted in Reading Record by parent/carer.
Spellings	Practise daily
Home Learning Tasks	Weekly task to be completed. Sent home Friday and returned Wednesday.

Parental Support

At all levels of homework, a brief written comment, or even a tick with a date can indicate that parents or an older family member have supported the child in a homework task. It may simply be that a parent has heard a child read. It is very helpful to the class teacher when this is done regularly.

Assessment

- To be fair to children who may not be able to have help from their families, homework will be evaluated, and credit given for effort, but it will not form part of any formal assessment process within school.
- However, regular homework tasks such as learning multiplication tables, may help children to perform at a higher level in formal assessments carried out in school.

Inclusion

Our school is an inclusive school. We aim to make all pupils feel included in all our activities. We try to make all our teaching fully inclusive. We recognise the entitlement of all pupils to a balanced, broadly-based curriculum. We have systems in place for early identification of barriers to their learning and participation so that they can engage in school activities with all other pupils. We acknowledge the need for high expectations and suitable targets for all children.

Equalities

Every child, regardless of faith, race, creed, gender or disability will have access to the curriculum at a level appropriate to their individual needs, in order that every child may experience success and satisfaction through their participation in learning.

Effectiveness

We believe this policy will be effective only if we ensure consistency across the school by regular monitoring.

Date of issue:	*****
School's phone number:	02920 702835
School's email address:	office@llandoughprimary.com
Website address for this policy:	www.llandoughprimary.com
Name of person responsible for maintaining this policy:	Mr M. Ellis (Head Teacher)